

Thank you for choosing the *new*  
CompX eLock® refrigerator kit.

CompX eLock®

CompX eLock® is a highly engineered lock with a motor-driven latch. Its uncompromising lock control electronics include a non-volatile memory that stores 250 user / supervisor codes and audit trail. With optional LockView® audit trail software, CompX eLock® remembers 1500 access attempts. Programming is simple with numeric keypad or Windows™ based LockView® software.



## Quick Programming Guide

### 1. GETTING STARTED:

- The unit is shipped with no user / supervisor codes
- Press and hold **#** until the beeping stops
- Input the new PIN (4 digit min) and press **#** or present new card
- This PIN / Card is now a supervisor in slot #001

### 2. ADD A USER:

- Input a valid supervisor PIN and press **#** or present valid supervisor card
- Press and hold **#** until beeping stops
- Input the new user PIN (4 digit min) and press **#** or present new card

### 3. ADD A SUPERVISOR:

- Input a valid supervisor PIN and press **#** or present valid supervisor card
- Press and hold **#** until beeping stops
- Press and hold **#** again until beeping stops
- Input new supervisor PIN (4 digit min) and press **#** or present NEW supervisor card

### 4. DELETE A USER OR SUPERVISOR:

- Input a valid supervisor PIN and press **#** or present valid supervisor card
- Press and hold **\*** until beeping stops
- Input the PIN to be deleted and press **#** or present existing card to be deleted

### 5. ADD A USER WITH A SPECIFIC SLOT ASSIGNMENT:

- Input a valid supervisor PIN and press **#** or present valid supervisor card
- Press and hold **#** until beeping stops
- Enter slot number that will be assigned to user and press **#**  
(example: to program slot 6 type 006 **#**)
- Input the new user PIN (4 digit min) and press **#** or present NEW card

### 6. DELETE A USER WITH A SPECIFIC SLOT ASSIGNMENT:

- Input a valid supervisor PIN and press **#** or present valid supervisor card
- Press and hold **\*** until beeping stops
- Enter slot number to be cleared and press **#** (example: to clear slot 6 type 006 **#**)
- Enter slot number to be cleared again and press **#** (example: to clear slot 6 type 006 **#**)

See programming guide included with optional **LOCKVIEW®** software for advanced programming instructions.



### What's in the box?

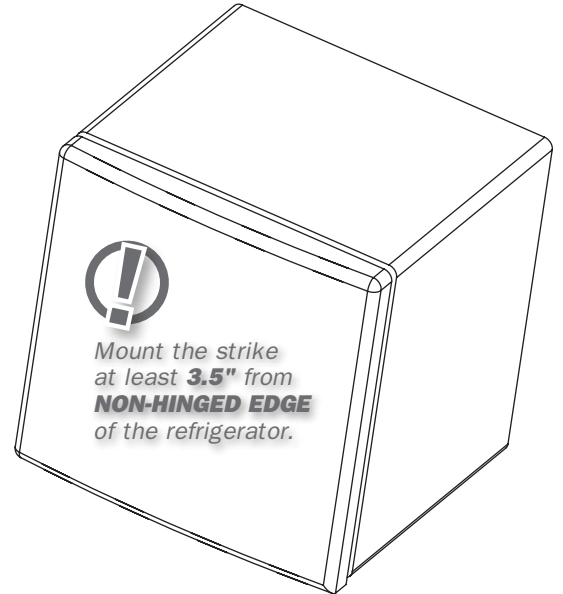
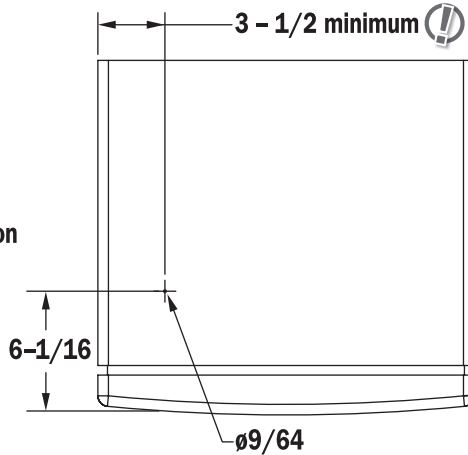
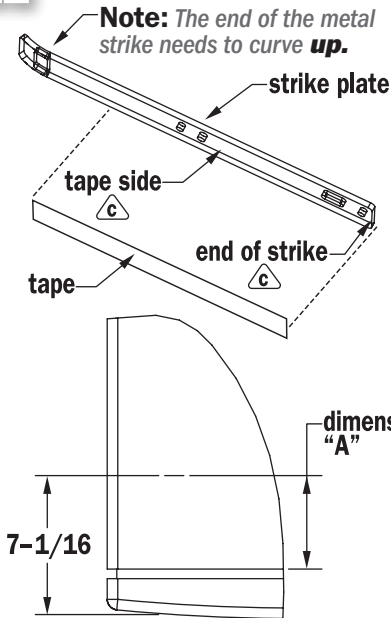
- 8 - #8 tamper resistant .5" screws
- 2 - #8 tamper resistant 3/8" screws
- 1 - strike plate
- 1 - strike plate cover
- 1 - CompX eLock® instruction sheet
- 3 - double-sided tape 7.5" X 1"
- 1 - complete eLock refrigerator kit (batteries not included)
- 1 - series of serial code stickers (keep in a safe place)
- 1 - factory reset card (magstripe or prox units only)

### What's needed?

- T15 pin-in-head torx tool
- 6 - AA batteries
- tape measure (or ruler)
- drill (if doing drilling installation)

## Step 1: Install the strike

There are two main parts of this installation: installing the strike and installing the eLock assembly. The strike and the eLock assembly can be mounted either with foam tape or by drilling holes and using screws. It is important to note that mounting the strike and the eLock assembly are independent of each other. One can be foam tape mounted, and one can be drill mounted if desired. The two do not need to be mounted using the same method.



### Foam Tape Installation

Please note that if foam tape installation of the strike is used, the strike will **not** be adjustable once it's put in place.

- Clean top of both the refrigerator and the strike with rubbing alcohol. Wait for the alcohol to dry.
- With a pencil, mark refrigerator 7-1/16" from the front of the door and at least 3.5" from the non-hinged edge.

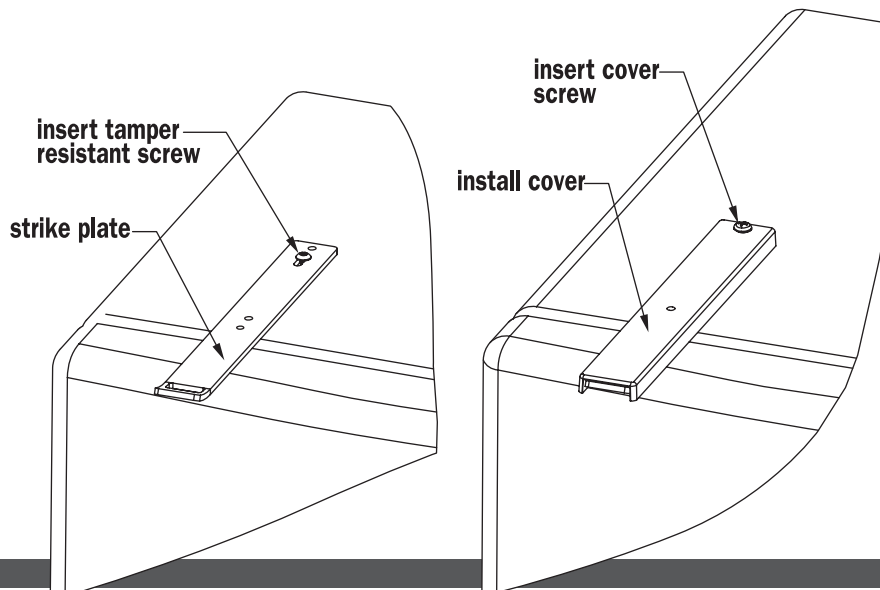
Measure from this line to the front of the cabinet (dim. "A"); cut a piece of tape this length.

- Remove tape backer and affix to end of strike. The upward curve should be on top. Apply tape to the opposite side. Remove backer. Line up strike with line on refrigerator; apply pressure to seal it on.

### Drilling Installation

- Before drilling, verify that there are no refrigerant lines inside the top of the refrigerator.
- Drill a 9/64" hole, 6-1/16" from the edge of the front of the refrigerator and at least 3.5" from the non-hinged edge of the refrigerator.

## Step 2: Secure the strike and attach the strike cover (if strike was mounted using foam tape, ONLY do b.)



- Screw one tamper resistant sheet metal screw into the center of the strike's slotted area. **Note: The end of the metal strike needs to curve up.**
- Place the plastic strike cover over the metal strike. If strike was mounted using foam tape, please proceed to Step 3.
- Attach with one tamper resistant machine screw.

# Installing the Refrigerator Kit *continued*

## Step 3: Mount the main CompX eLock<sup>®</sup> body to the refrigerator door

The CompX eLock<sup>®</sup> assembly (body) can be mounted to the front of the refrigerator either by using foam tape or by drilling holes.

### Foam Tape Installation

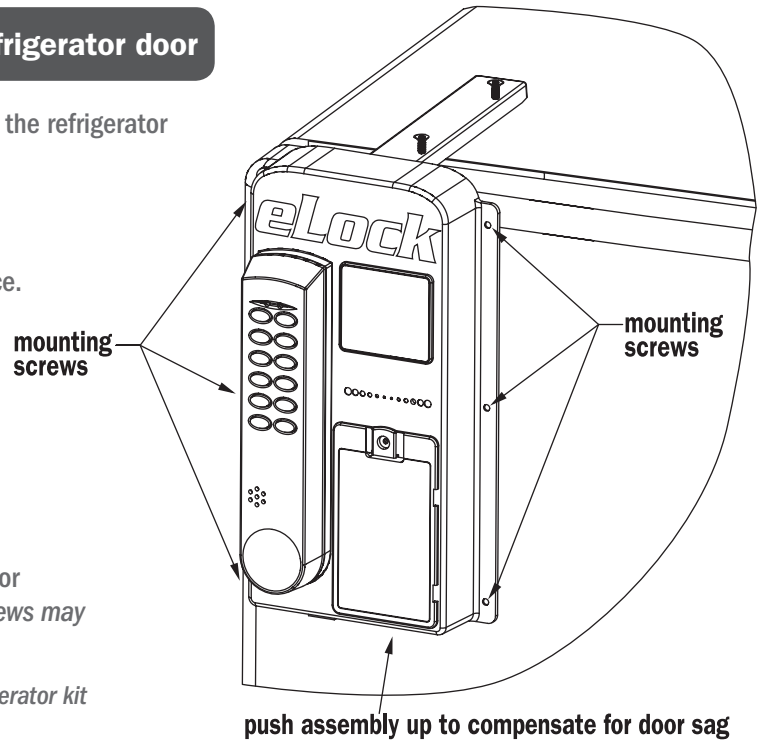
Please note that if foam tape installation of the strike is used, the main CompX eLock<sup>®</sup> will **not** be adjustable once it's put in place.

- Install one piece of double-sided tape on each side of the CompX refrigerator eLock assembly.
- Remove liner from double-sided tape.
- Carefully press CompX eLock<sup>®</sup> onto the center of the strike.

### Drilling Installation

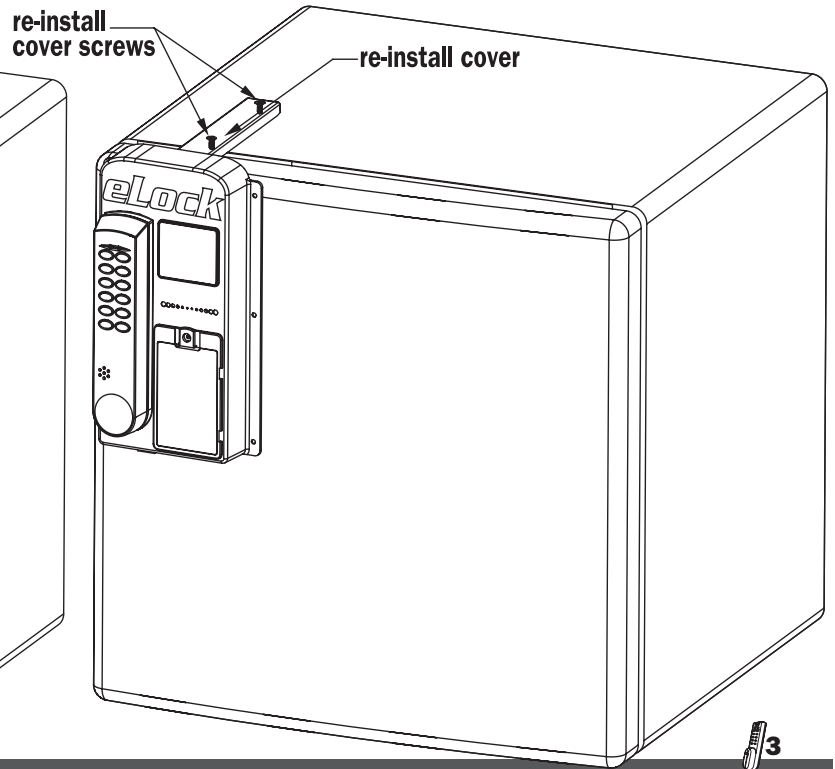
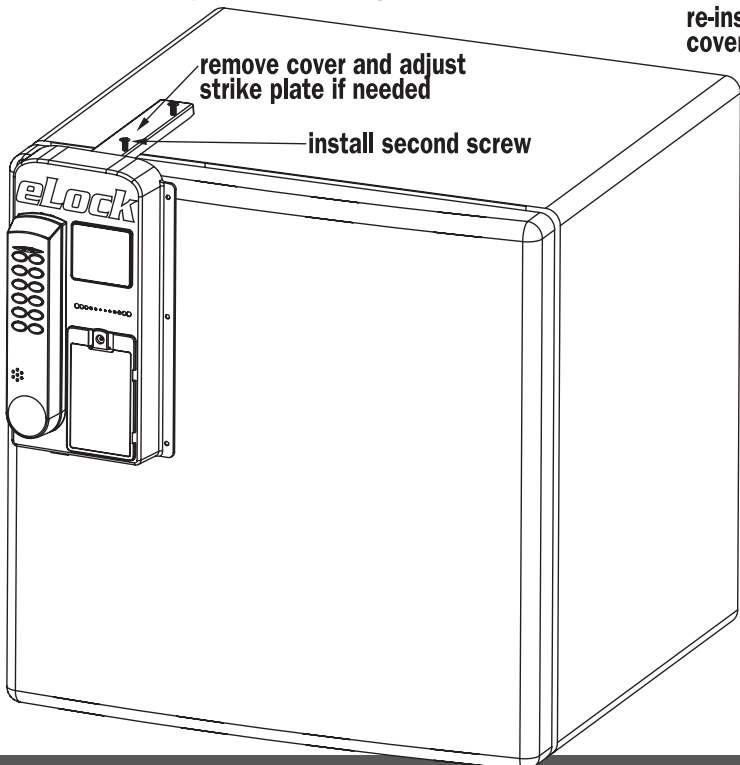
- Click CompX eLock<sup>®</sup> onto strike.
- Push assembly up and center it on the strike.
- Drill six 9/64" holes through the housing into the refrigerator door for the mounting screws. Secure with screws. **Note:** Top two screws may be omitted if they interfere with door handle access.

**Note:** If foam tape was used to mount the strike, the CompX eLock<sup>®</sup> refrigerator kit installation is **COMPLETE**. The CompX eLock<sup>®</sup> may now be used.



## Step 4: Finish installation of the strike (ONLY if drilled installation of strike was used)

- Remove the plastic cover from the strike plate. Drill 9/64" hole in second opening of strike.
- If adjustment of strike is needed, loosen up the first strike screw and adjust the strike. Tighten up the screw.
- Drill hole for second screw and install second screw.
- Reattach the plastic strike cover and attach with two tamper resistant machine screws.





## HID® PROX USER, SUPERVISOR CARD

Part Number:  
**EL-2004-PC** (no logo)  
**EL-2004-PC-S** (CSP logo)



## MAGSTRIPE USER, SUPERVISOR CARD

Part Number:  
**EL-2004-MSC** (no logo)  
**EL-2004-MSC-S** (CSP logo)



## LOCKVIEW® SOFTWARE KIT

(provided with 7ft., 6-pin RJ11 cable,  
1-USB dongle, 1 LockView® CD)

Part Number:  
**EL-2004-LV**



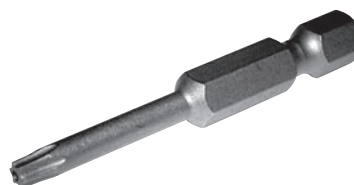
## HID® PROX TAG

Part Number:  
**EL-2004-PT**



## SCREWDRIVER

Part Number:  
**EL-DRV-15**



## BIT

Part Number:  
**EL-BIT-15**

HID is a trademark of HID Corporation.

\* These items are offered as Service / Replacement Parts only.

## LockView® 3.0 Software

- Add, edit, view and delete users / supervisors and their credentials
- Add, edit and delete CompX eLocks®
- Assign access rights between users / supervisors and CompX eLocks® in the database
- USB connection required
- Download, view, save, print, archive and delete audit trails
- Dual credential access available
- Set real time clock
- Time based access restrictions
- Create user groups
- Windows™ based
- View Temperature Logs
- View Temperature Graphs
- Edit Temperature Settings

LockView is a Registered Trademark of CompX International. Windows is a trademark of the Microsoft Corporation. Specifications may vary based on user application.

**NOTE:**  
Don't forget to fill out and return your **WARRANTY CARD!**

**864.297.6655**

compX.com  
elock@compX.com  
PO Box 200  
Mauldin, SC 29662

**TECHNICAL HOTLINE**  
**847-752-2525**  
M-F: 8 a.m.-5 p.m. Central

# CompX eLock® Warranty Card

These stickers are included with each CompX eLock® unit. Please review the information and keep the stickers in a safe location as they may be needed to reset or identify a specific eLock unit. The codes shown here are not real codes. They are representations of what the stickers will look like.



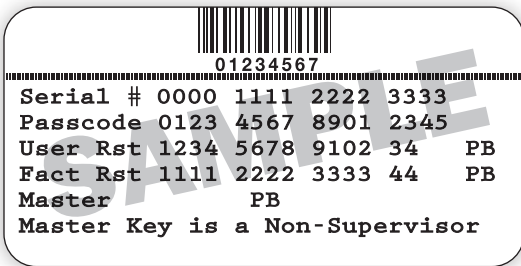
**Sticker #1**

2d bar code. Provides the same information as sticker number three, but a 2d laser scanner is needed to decode the information.



**Sticker #2**

1d bar code. Place this sticker on or around the CompX eLock® unit to help identify which codes to use if resetting the lock is necessary.



**Sticker #3**

**Keep this sticker in a safe location.**

**Serial #:** Needed to identify CompX eLock® units

**Passcode:** Unique to lock. Needed for LockView. Prevents unauthorized LockView use

**User Rst:** Allows administrator or owner to erase all user codes from eLock unit but keep supervisor codes

**Fact Rst:** Erases all codes from eLock, including settings. eLock unit will need to be set up again after a Factory Reset (see page 2)

**(SAMPLE) CompX eLock® Registration card**

Company \_\_\_\_\_ Phone# (    ) \_\_\_\_\_

Address \_\_\_\_\_

Authorized Contact \_\_\_\_\_

Position \_\_\_\_\_

Serial # \_\_\_\_\_

Pass Code \_\_\_\_\_

User Reset Code \_\_\_\_\_

Factory Reset Code \_\_\_\_\_

01234567

Serial # 0000 1111 2222 3333  
 Passcode 0123 4567 8901 2345  
 User Rst 1234 5678 9102 34 PB  
 Fact Rst 1111 2222 3333 44 PB  
 Master PB  
 Master Key is a Non-Supervisor

**Sticker #3**

**NOTE:** Don't forget to fill out and return your **WARRANTY CARD!**

Affix one copy of sticker #3 to the CompX eLock® registration card and return to CompX Fort at address shown on the other side of the registration card.