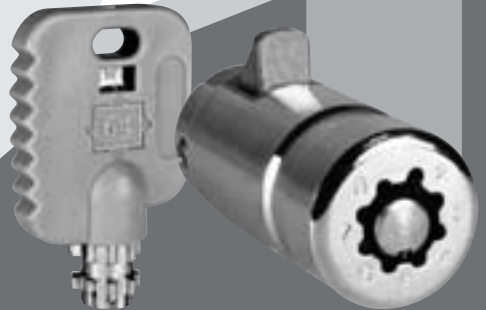


CompX[®]
CHICAGO

Operating Instructions

System 64[®]
generation II



Operating Instructions

Operating Instructions

Your registered System 64-generation II locks are shipped from the factory set to combination number one of group number one. We recommend that you always return to the factory set position before reprogramming. If you wish to change the combination within group number one, you need only the black reset key and the appropriate grey operating key for the new combination. Follow the steps in section A for this procedure. If you wish to change combinations between groups, go to section B.

Section A

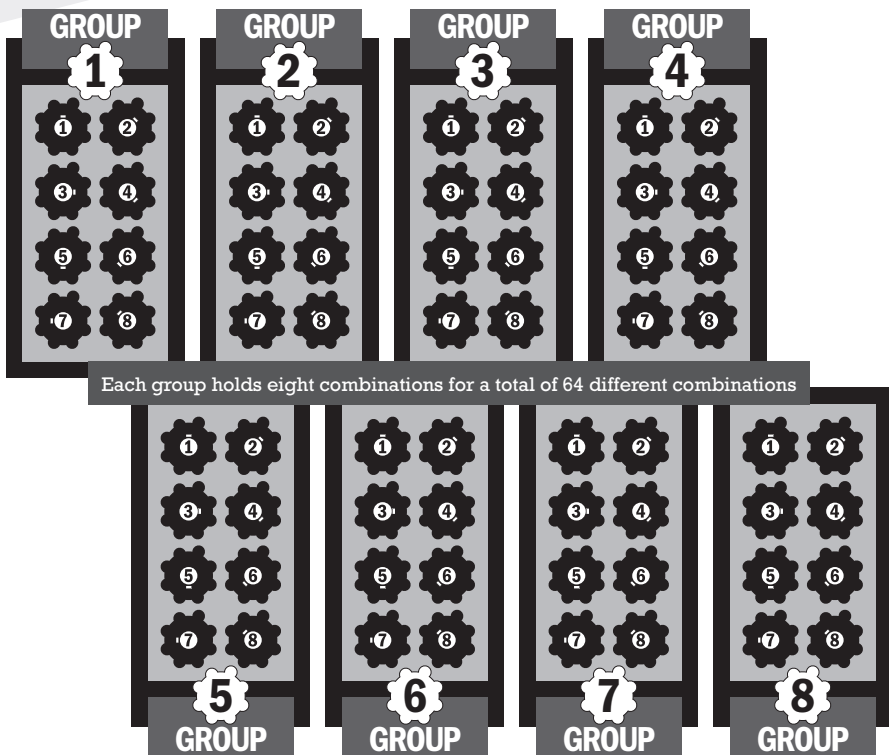
Changing combinations within a group

- 1 Insert the black reset key at position number one as marked on the face of lock.
- 2 Rotate the black reset key clockwise to any of the other seven positions as determined by your new operating key. Remove the black reset key at that position.
- 3 Insert the new grey operating key at position one, and test for proper operation. (Note: grey operating keys can only be inserted at position one.) Your lock is now programmed to function **only** with the new operating key.
- 4 To make further combination changes within the same group, insert the black reset key at the numbered position that corresponds to your current operating key.
Return the black reset key to position number one. Repeat steps one through three above.
There are a number of rules that you must follow to change groups and combinations within groups.
- 2 Select a new operating key from your 64 options. Note the new group and combination numbers as designated on your new operating key. (See example on following page.)
- 3 Using your red group key, insert at position one, and rotate clockwise to the group number designated on your new operating key.
- 4 Remove the red group key at the new group position and insert the black reset key at that same position. Rotate the black reset key counter-clockwise to the number one position. You are now ready to reprogram the lock within any of the eight combinations available for the group setting you have selected.
- 5 Determine the operating key number you have selected, and insert the reset key at position one. Rotate the reset key clockwise to the number that corresponds to your new operating key number and remove. Your lock is now programmed for your selection of the new operating key. **Remember... your operating key only works from position one.**

Section B

Changing group combinations

- 1 Assuming that your lock is set to one of the combinations in group one, insert the reset key at the current combination position (one thru eight) and return to position one. You are now at the factory setting of group one – combination one.
- 6 **Important:** To continue to change group positions you must use the reset key to return the lock to the existing group position. Once done, you may now use the red group key to return to position one. The lock is now effectively “zeroed” to the original factory setting and you can proceed to recombine according to the above instructions.



Section C

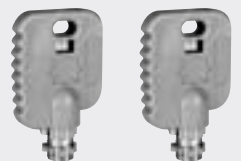
Reprogramming instructions

In the unlikely event that you lose track of a combination within System 64-generation II, please follow the instructions listed below, which will reprogram the lock. To reprogram System 64-generation II, it is always necessary to return the cylinder to group number one, combination number one.

- 1 Insert the black reset key at the number one position. If the key does not turn, remove it. Then reinsert the key at position number two. If it still won't turn, reinsert at positions three through eight until the black reset key **will turn**. Once the key rotates, return key to position number one and remove.
- 2 Insert the red group key at position number one. If the key will not turn, remove it, then reinsert the black reset key and rotate to position number two and remove. Reinsert the red group key at position number two and attempt to turn. If unsuccessful, repeat the steps for all remaining positions until the red

group key rotates. Once the red group key rotates, return to position number one and remove. This procedure will reprogram the lock to group number one, combination number one. If additional assistance is required, please contact our sales department at **(864) 297-6655**.

Example of Operating Key Codes which Establish Group and Combination Settings



Reset key sets combination Group key sets group number

A-G = Group Key (Red)

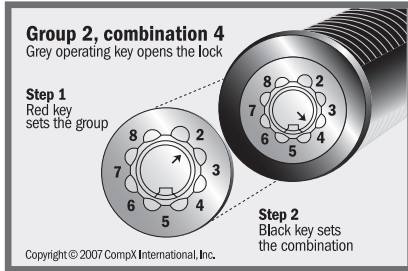
A-R = Reset Key (Black)

A1-1 = Operating Key (Grey)
Group 1, Combination 1

A2-2 = Operating Key (Grey)
Group 2, Comb. 2

A3-3 = Operating Key (Grey)
Group 3, Combination 3

How System 64-generation II Works



Supervisor's Key

System 64-generation II gives you the option of providing a supervisor's key. Simply select one of the 64 combinations available and designate that for exclusive use by your supervisor. The supervisor can then carry only three keys: the red group key, the black reset key, and his own designated grey operating key. As long as he knows the code for the normal operating key, he can quickly reprogram the lock to his own code, access the machine and then reestablish the regular operating combination.

864.297.6655

compX.com

**PO Box 200
Mauldin, SC 29662**

Copyright 2007 © CompX Security Products